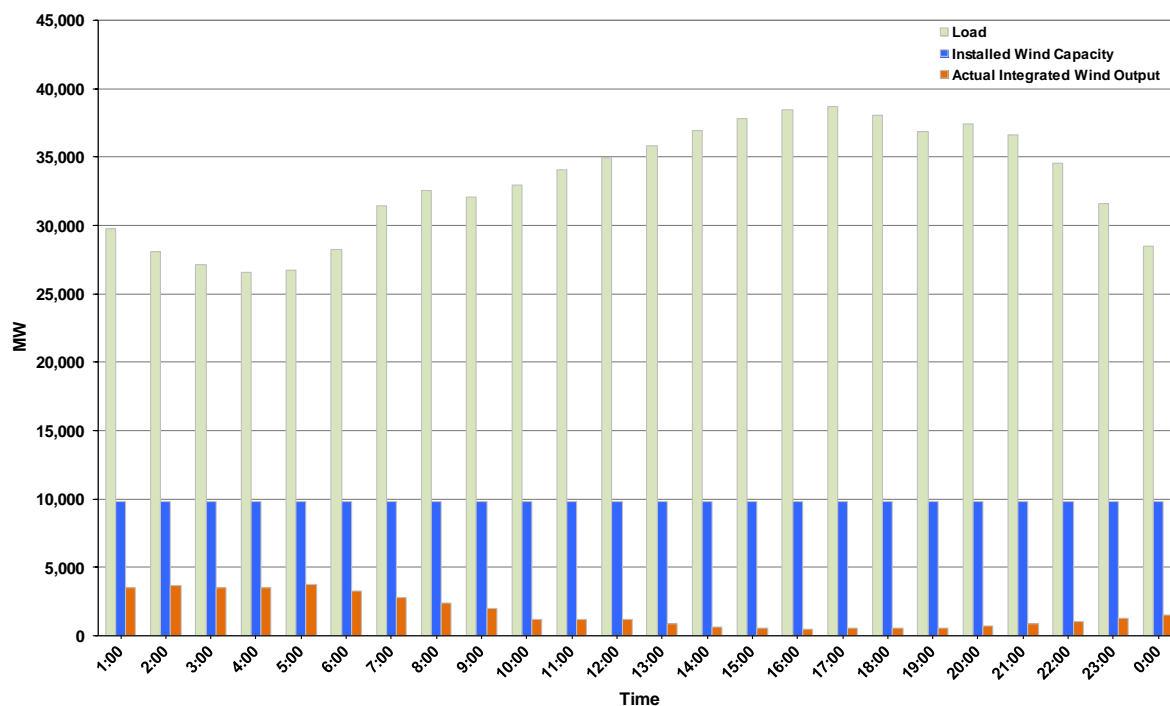




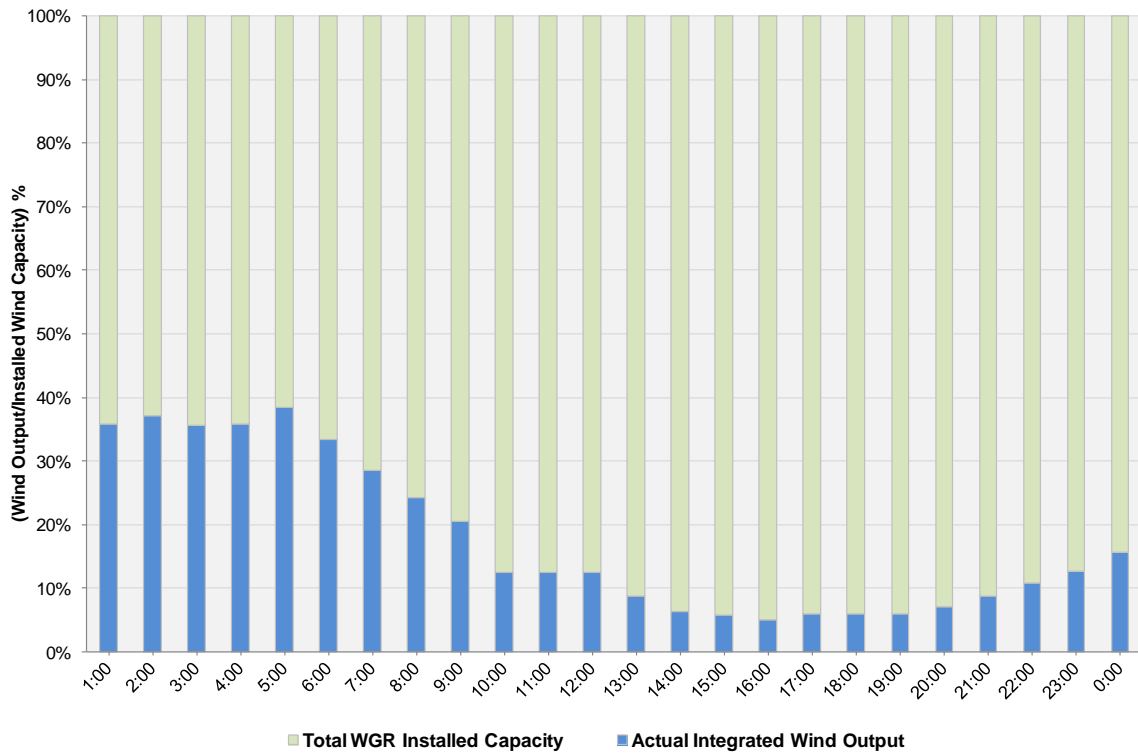
## ERCOT Grid Operations Wind Integration Report: 10/18/2012

Peak Load	38,733 MW
Load Peak Hour (HE)	17
Wind over Peak	584 MW
Wind Record 06/19/12	8,368 MW
Max Wind Value	3,877 MW
Wind Peak Time	04:25
Wind Integration %	14.51%

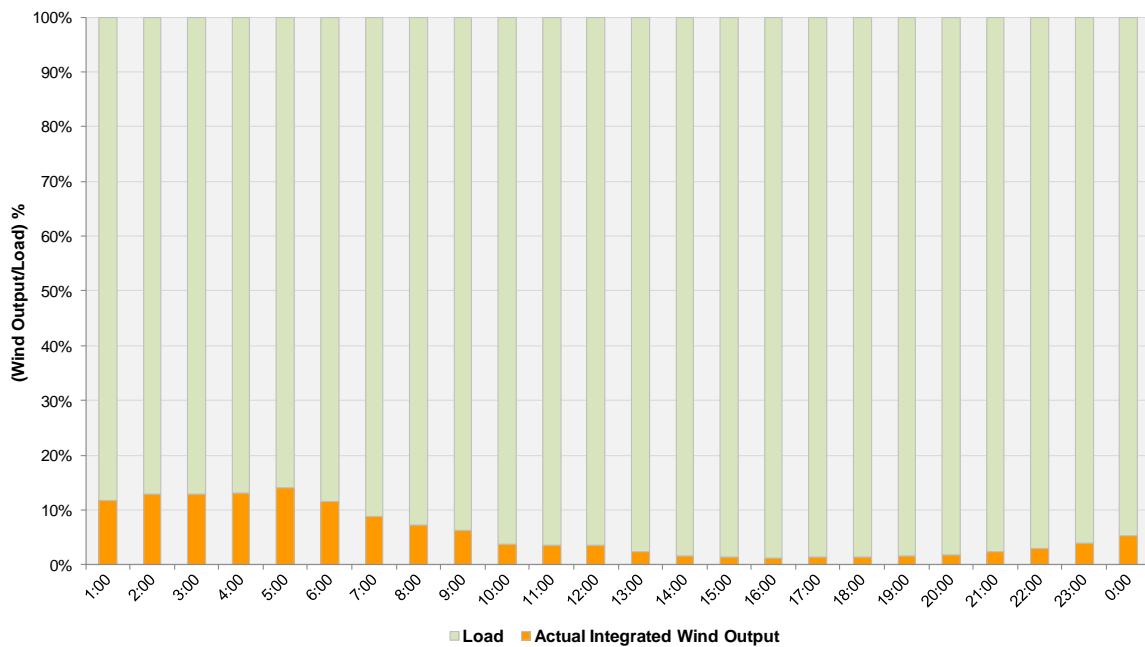
**Hourly Average Actual Load vs. Actual Wind Output  
10-18-2012**



**Actual Wind Output as a Percentage of the Total Installed Wind Capacity**  
**10-18-2012**



**Actual Wind Output as a Percentage of the ERCOT Load**  
**10-18-2012**



ERCOT Load vs. Actual Wind Output 10/11/2012 - 10/18/2012

